

CONDITION REPORT - ELECTRIC

Manufacturer	Model	Year	Serial Number
YALE	OS030BF	2019	E826N05042T

Mast		Hours	6269
Mast Height Lowered	10	Voltage	24 Volt
Mast Height Raised	25	Attachment	
Hydraulic Control Valve		Directional Control	
Capacity	2000	Tires	Non-Marking

Mast Condition		Steering Pump Condition	
Mast Comments		Steering Pump Comments	
Lift Cylinder Condition		Hydraulic Pump Condition	
Lift Cylinder Comments		Hydraulic Pump Comments	
Tilt Cylinder Condition		Hydraulic Motor Condition	
Tilt Cylinder Comments		Hydraulic Motor Comments	
Carriage Condition		Control System Condition	
Carriage Comments		Control System Comments	
Load Backrest Condition		Drive Motor Condition	
Load Backrest Comments		Drive Motor Comments	
Forks Condition		Differential Condition	
Forks Comments		Differential Comments	
Overhead Guard Condition		Drive Tires % Remaining	80
Overhead Guard Comments		Drive Tires Condition	
Seat Condition		Steer Tires % Remaining	
Seat Comments		Steer Tires Condition	Not-Selected
General Appearance Condition	Good	Steer Axle Condition	
General Appearance Comments		Steer Axle Comments	
		Brakes Condition	
		Brakes Comments	

General Comments

operator lights not working platform gate arms damaged drive unit cover hardware missing drive unit doors hardware missing

Battery Present	Yes
Charger Present	Yes
Electrical Condition	
Electrical Comments	

Inspector Company Name	eastern lift truck	Inspection Date	3/27/2023 9:30:05 PM
Inspector Name	Tjcolvin		

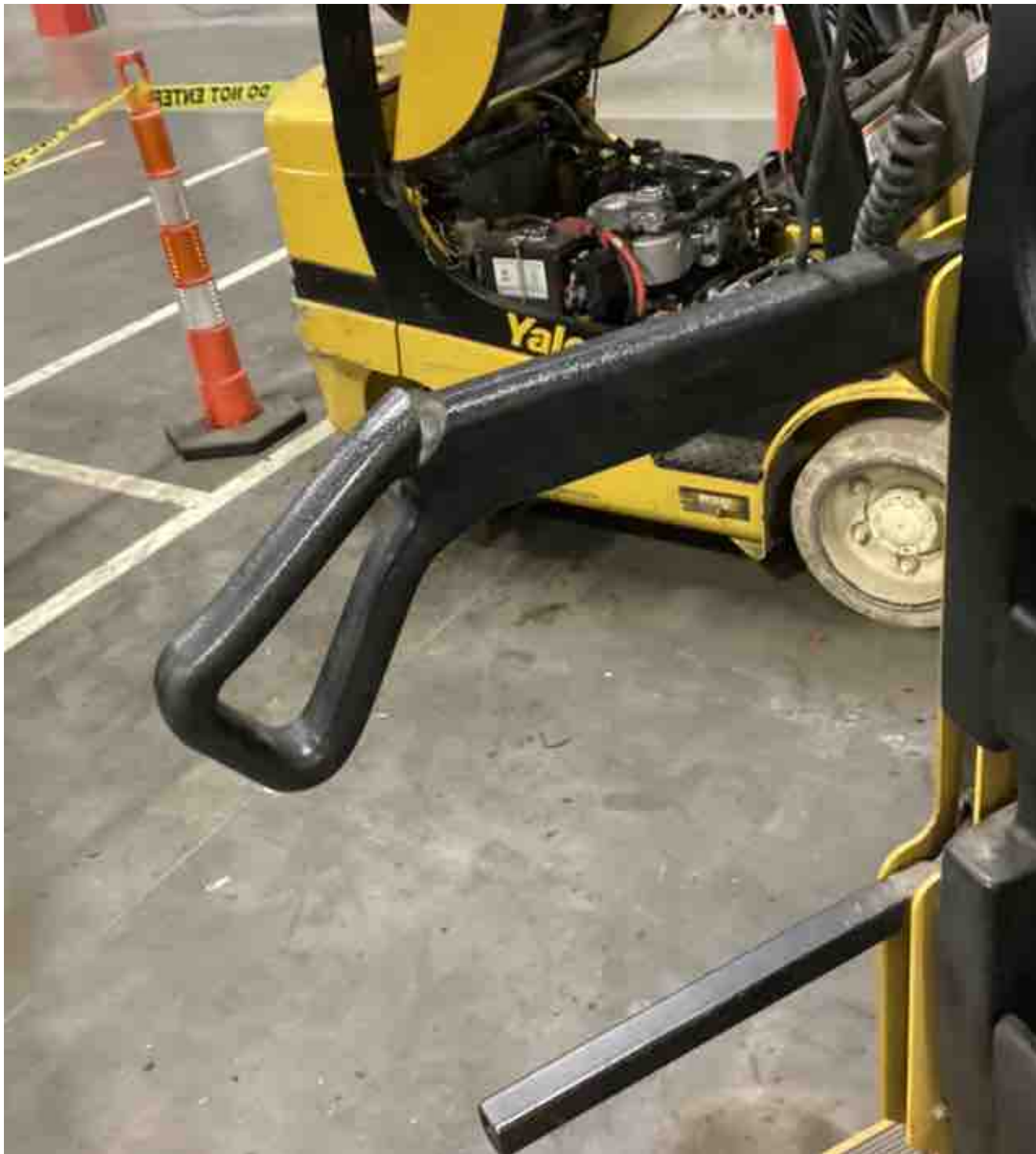
(* Legend: =Checked OK)











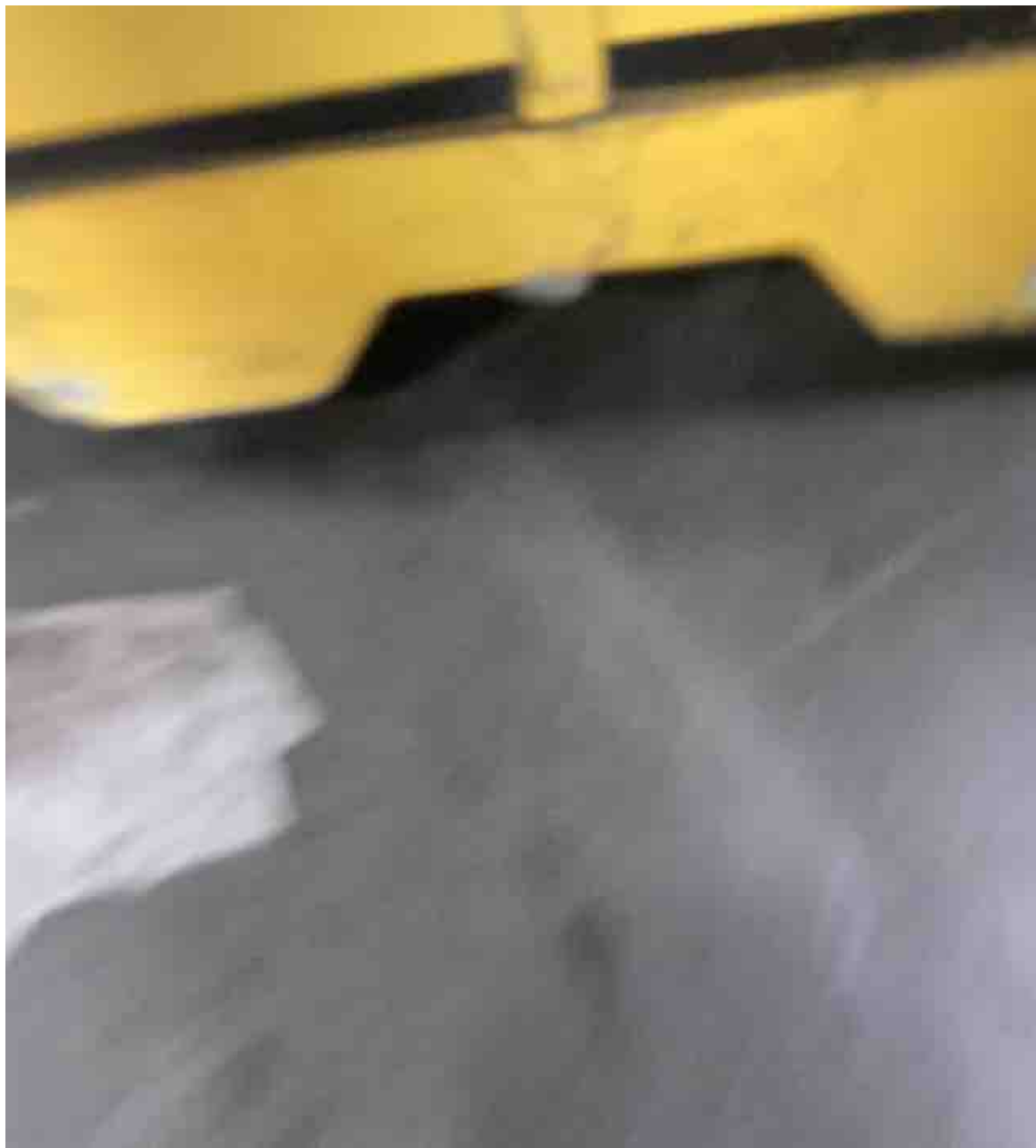












Yale

Lift Truck Model
05030BFN24TE134

Attachment: 1219 mm (48 in) Wide X 698 mm
(27.5 in) Deep Op Platform = 1067 mm (42 in)
Forks

Type: E Volts: 24 Max A.H. (8 Hr Rt) :1240
Truck Weight Less Battery 2550 kg (5612 lb)
Truck Weight Max Battery 3410 kg (7512 lb)
Min Battery Wt. 720 kg (1600 lb)
Max Battery Wt. 860 kg (1900 lb)
Base Width 1220 mm (48 in)
Wheel Base 1440 mm (57.0 in)

Trained Operators and Mechanics Only



Read Operating Manual
located on Drive Unit Cover

WARNING

Failure to follow operating instructions and
maintenance instructions can cause
serious injury or death.

**CAPACITY WITH MAST VERTICAL
AND EQUIPPED AS SHOWN**

MAXIMUM CAPACITY	910 kg (2000 lb)	1360 kg (3000 lb)
Load Height Dim. A	7620 mm (300 in)	7010 mm (276 in)
Load Height Dim. B	610 mm (24 in)	610 mm (24 in)
Load Height Dim. C	610 mm (24 in)	610 mm (24 in)

Serial Number: E826N05042T-

