

# CONDITION REPORT - ELECTRIC

Manufacturer	Model	Year	Serial Number	Corrected
HYSTER COMPANY	R30XM3	2017	H118N04206R	H118N04206R

Mast	3 Stage FFL (Triplex)	Hours	971
Mast Height Lowered	118	Voltage	24 Volt
Mast Height Raised		Attachment	None
Hydraulic Control Valve	2-Function	Directional Control	Lever
Capacity	3000	Tires	Cushion

Mast Condition		Steering Pump Condition	
Mast Comments		Steering Pump Comments	
Lift Cylinder Condition		Hydraulic Pump Condition	
Lift Cylinder Comments		Hydraulic Pump Comments	
Tilt Cylinder Condition	Not applicable	Hydraulic Motor Condition	
Tilt Cylinder Comments		Hydraulic Motor Comments	
Carriage Condition		Control System Condition	
Carriage Comments		Control System Comments	
Load Backrest Condition	Not applicable	Drive Motor Condition	
Load Backrest Comments		Drive Motor Comments	
Forks Condition		Differential Condition	
Forks Comments		Differential Comments	
Overhead Guard Condition		Drive Tires % Remaining	50
Overhead Guard Comments		Drive Tires Condition	Chunked
Seat Condition	Not applicable	Steer Tires % Remaining	
Seat Comments		Steer Tires Condition	
General Appearance Condition	Poor	Steer Axle Condition	Not applicable
General Appearance Comments	Impact damage	Steer Axle Comments	
		Brakes Condition	
		Brakes Comments	

## General Comments

operator platform in the right side ls bent . drive tire chunked

Battery Present	Yes
Charger Present	Yes

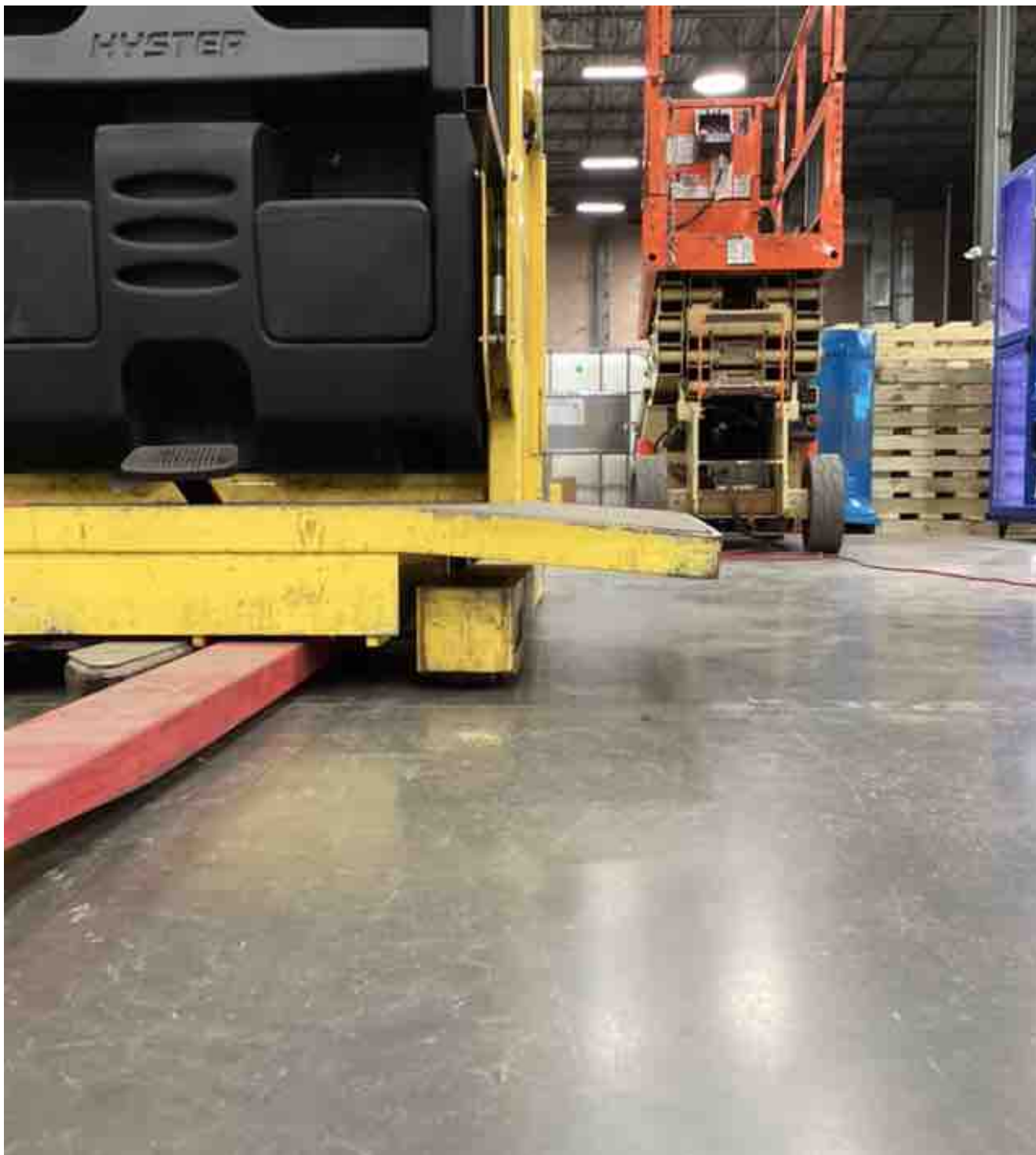
Electrical Condition	
Electrical Comments	

Inspector Company Name	eastern lift truck	Inspection Date	5/31/2023 9:19:20 AM
Inspector Name	jarace		

(\* Legend: =Checked OK)









**LiTruck Model R20XMS**

Dimensions: 1929 mm (63 in) Width x 985 mm (37.9 in) Depth  
 Deck to Platform x 1081 mm (42 in) Forks 765 mm (30 in) spaced 212 mm (8 in)

Type E 2A with 4000 kg (8816 lb) lift

Load Capacity

Load Capacity (L1)	2400 kg (5291 lb)
Load Capacity (L2)	2250 kg (4960 lb)
Load Capacity (L3)	750 kg (1653 lb)
Load Capacity (L4)	400 kg (882 lb)
Load Capacity (L5)	150 kg (331 lb)
Load Capacity (L6)	50 kg (110 lb)

Trained Operators and Maintenance Only

 **WARNING**

Failure to follow safety rules, instructions, and maintenance procedures may result in serious injury or death.

**CAPACITY WITH MAST VERTICAL AND EQUIPPED AS SHOWN**

MAXIMUM CAPACITY	890 kg (1960 lb)	1380 kg (3000 lb)
Load Capacity (L1)	700 kg (1543 lb)	540 kg (1190 lb)
Load Capacity (L2)	610 kg (1345 lb)	450 kg (992 lb)
Load Capacity (L3)	410 kg (904 lb)	350 kg (772 lb)

Serial Number: H114004206H















